



55A Wallgate, Wigan, WN1 1BE

QUOTING RENT: £6,500 Per Annum

- THREE FLOORS OF OFFICE SPACE
- 1,054SQFT OF ACCOMMODATION
- CLOSE PROXIMITY TO WIGAN NORTH WESTERN AND WIGAN WALLGATE TRAIN STATIONS

55A Wallgate, Wigan, WN1 1BE

****NEWLY REFURBISHED - TOWN CENTRE OFFICE SPACE****

A mixed use end of terrace building of traditional construction, providing office accommodation on the three upper floors of approx 1,054sqft.

The property is located on Wallgate, a main thoroughfare in the town of Wigan and is situated directly opposite Wigan North Western Railway station which has direct connections to London Euston.



First Floor Offices

140'5" (42.8)

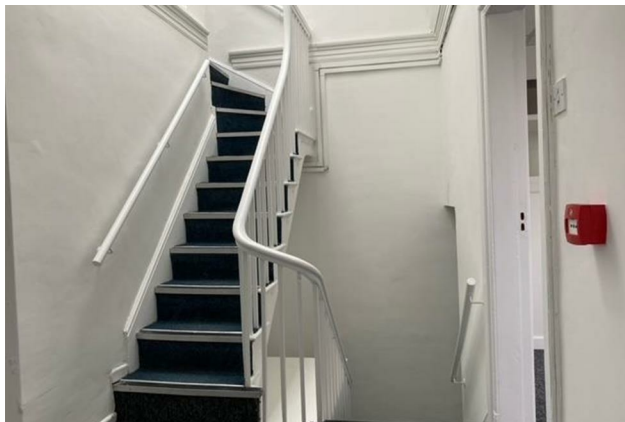
First Floor W/c

Second Floor Offices

132'2" (40.3)

Third Floor Offices

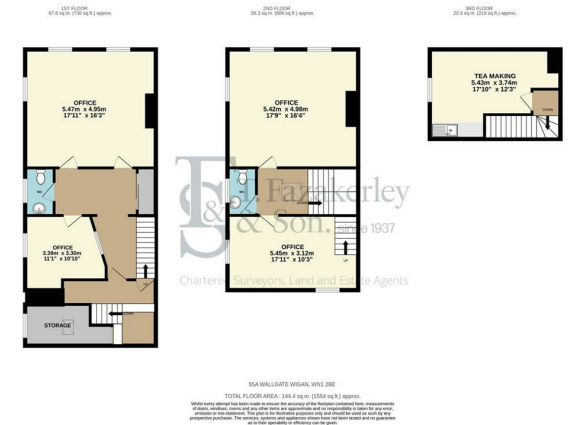
131'10" (40.2)



Area Map



Contextual



Energy Efficiency

- D97

3 Wrightington Street, Wigan, Greater Manchester, WN1 2AZ

Tel: 01942 242 636 Email: Info@fazakerleysharpe.co.uk www.fazakerleysharpe.co.uk